

# MAKROPHYTENKARTIERUNG MONDSEE

## Kartenband

Untersuchung im Auftrag der  
Landesregierung Oberösterreich  
Gewässerschutz

### Projektleitung und -organisation

Mag. Karin Pall

### Verfasser

Mag. Karin Pall

DI Veronika Moser

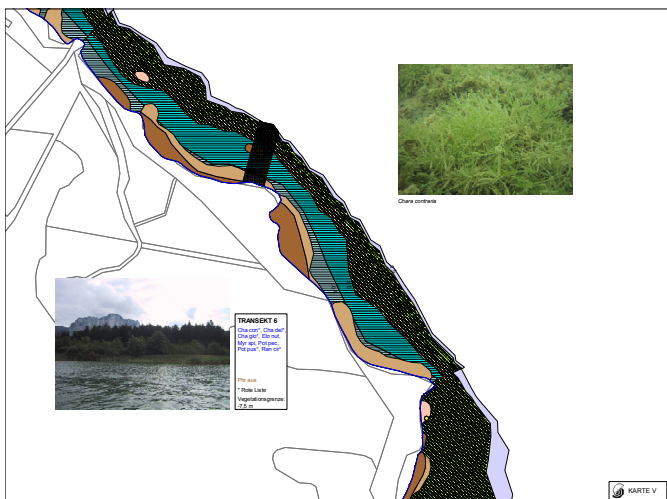
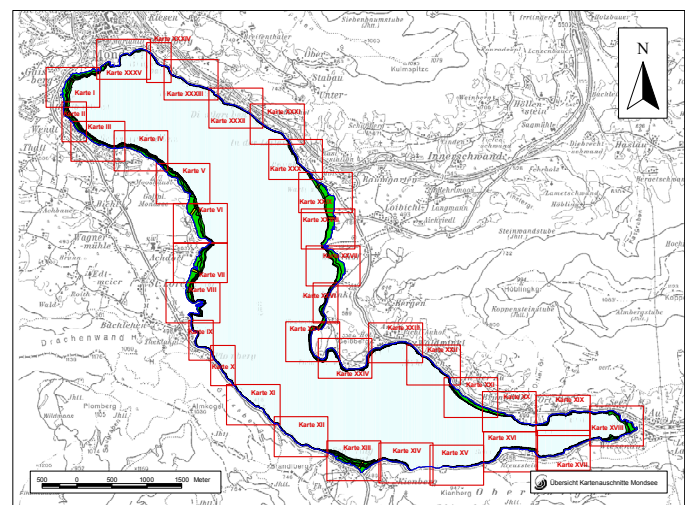
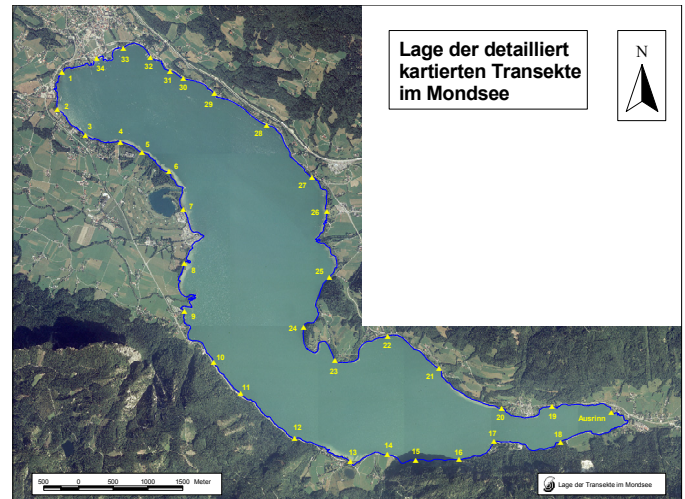
### Mitarbeiter

Stefan Mayerhofer

Mag. René Till

**Kartierungszeitraum:** August 2002

**Erstellungsdatum:** November 2004



### Grundlagen:

Echosondierung: Fa. ICRA, Salzburg

Orthofotos & Kartengrundlagen:

Landesregierung Oberösterreich

Systema Bio- und Management Consulting GmbH.

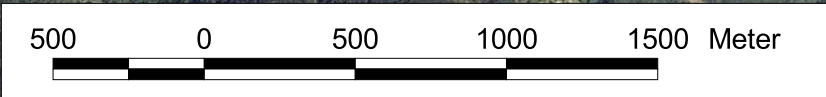
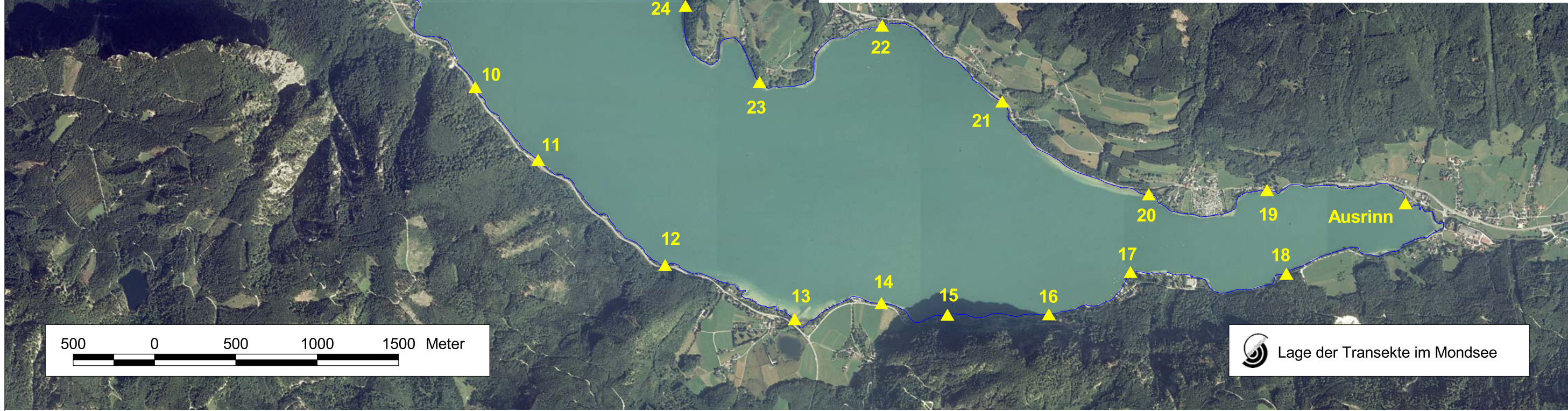
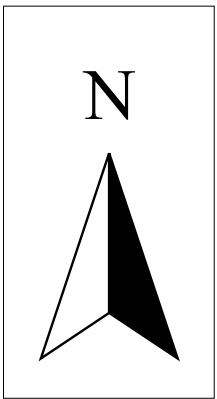
Bensasteig 8, 1140 Wien

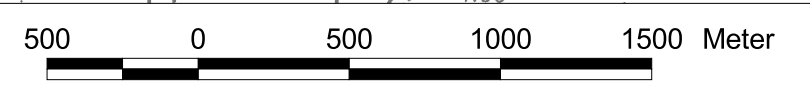
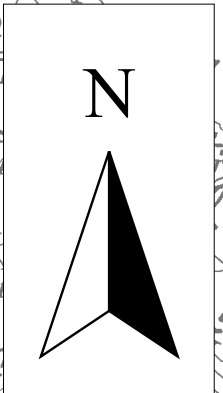
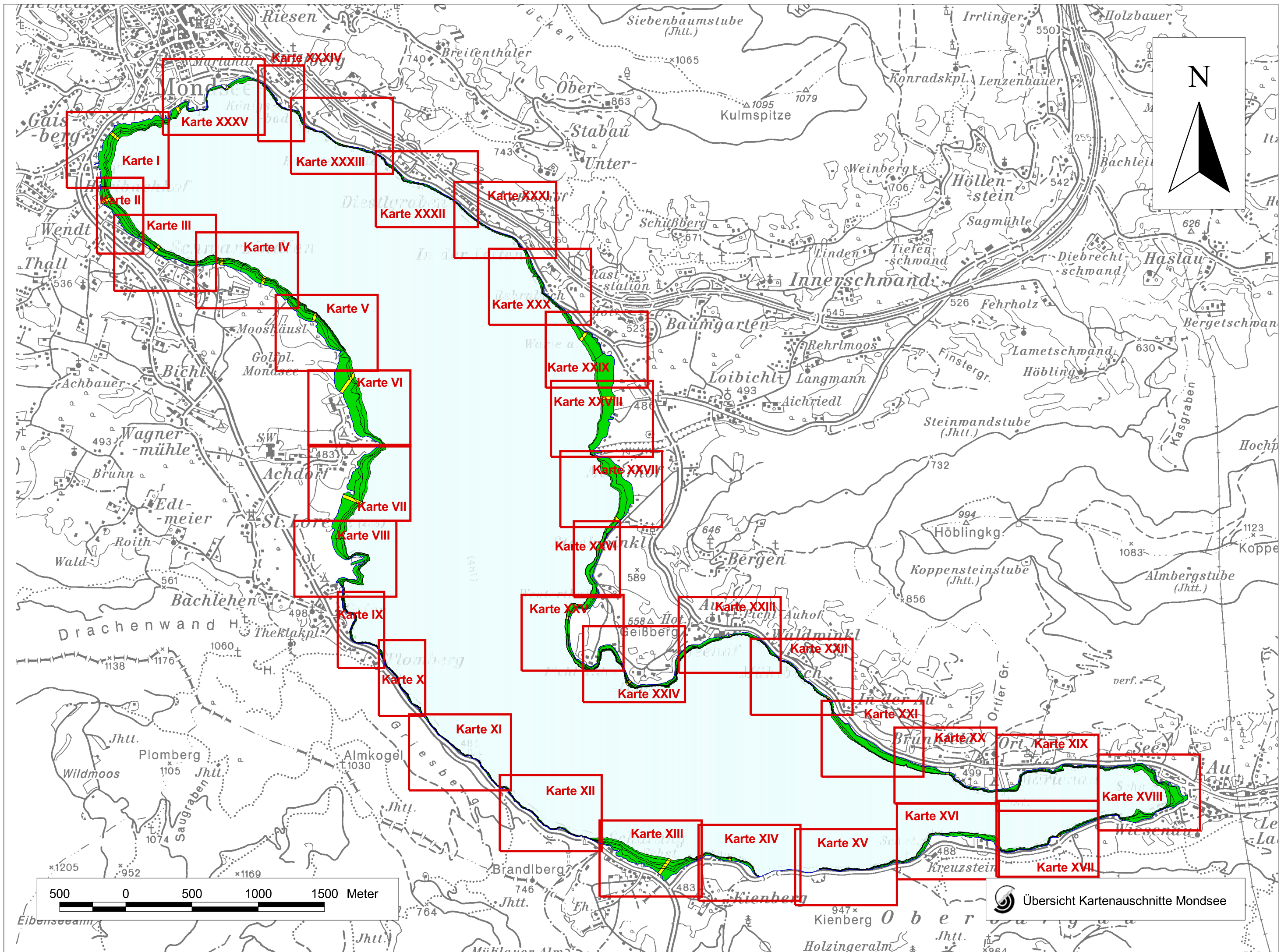
Tel.: 0043 - 1 - 419 90 90 Fax: DW 19

www.systema.at / e-mail: office@systema.at



# Lage der detailliert kartierten Transekte im Mondsee







Übersicht Kartenauschnitte Mondsee

## LEGENDE:

### Vegetationstyp

dicht schütter

  Schilf, Rohrkolben

  Binsen

  Schwimmblattpflanzen

  Characeen des Flachwassers, Strandlingsflur, Zwergbinsen

  Höhere Pflanzen, niederwüchsig

  Zone hochwüchsiger Arten (Laichkrautgürtel)

  Characeenwiesen der Tiefe

  Nitellafluren

 kein Makrophytenbewuchs

zusätzliche Schraffuren:

 mit niederwüchsigen Höheren Pflanzen

 mit hochwüchsigen Arten des Laichkrautgürtels

 mit Characeen

 Uferlinie

 betauchte Transekte

## MAKROPHYTENARTEN

### Untergetauchte Vegetation

#### Charophyta

Cha asp\* *Chara aspera*  
Cha con\* *Chara contraria*  
Cha del\* *Chara delicatula*  
Cha glo\* *Chara globularis*  
Cha tom\* *Chara tomentosa*  
Nit obt\* *Nitellopsis obtusa*  
Nit opa\* *Nitella opaca*

#### Bryophyta

Fon ant *Fontinalis antipyretica*

#### Spermatophyta

Cer dem *Ceratophyllum demersum*  
Ele aci\* *Eleocharis acicularis*  
Elo nut *Elodea nuttallii*  
Myr spi *Myriophyllum spicatum*  
Naj int *Najas intermedia*  
Naj mar *Najas marina*  
Pot cri *Potamogeton crispus*  
Pot muc *Potamogeton mucronatus*  
Pot pec *Potamogeton pectinatus*  
Pot per\* *Potamogeton perfoliatus*  
Pot pus\* *Potamogeton pusillus*  
Ran cir\* *Ranunculus circinatus*  
Utr aus\* *Utricularia australis*  
Zan pal *Zanichellia palustris*

#### Schwimmblattarten

Nup lut\* *Nuphar lutea*  
Nym alb\* *Nymphaea alba*

#### Röhrichtarten

Phr aus *Phragmites australis*  
Sch lac *Schoenoplectus lacustris*

50 0 50 100 Meter





**TRANSEKT 1**

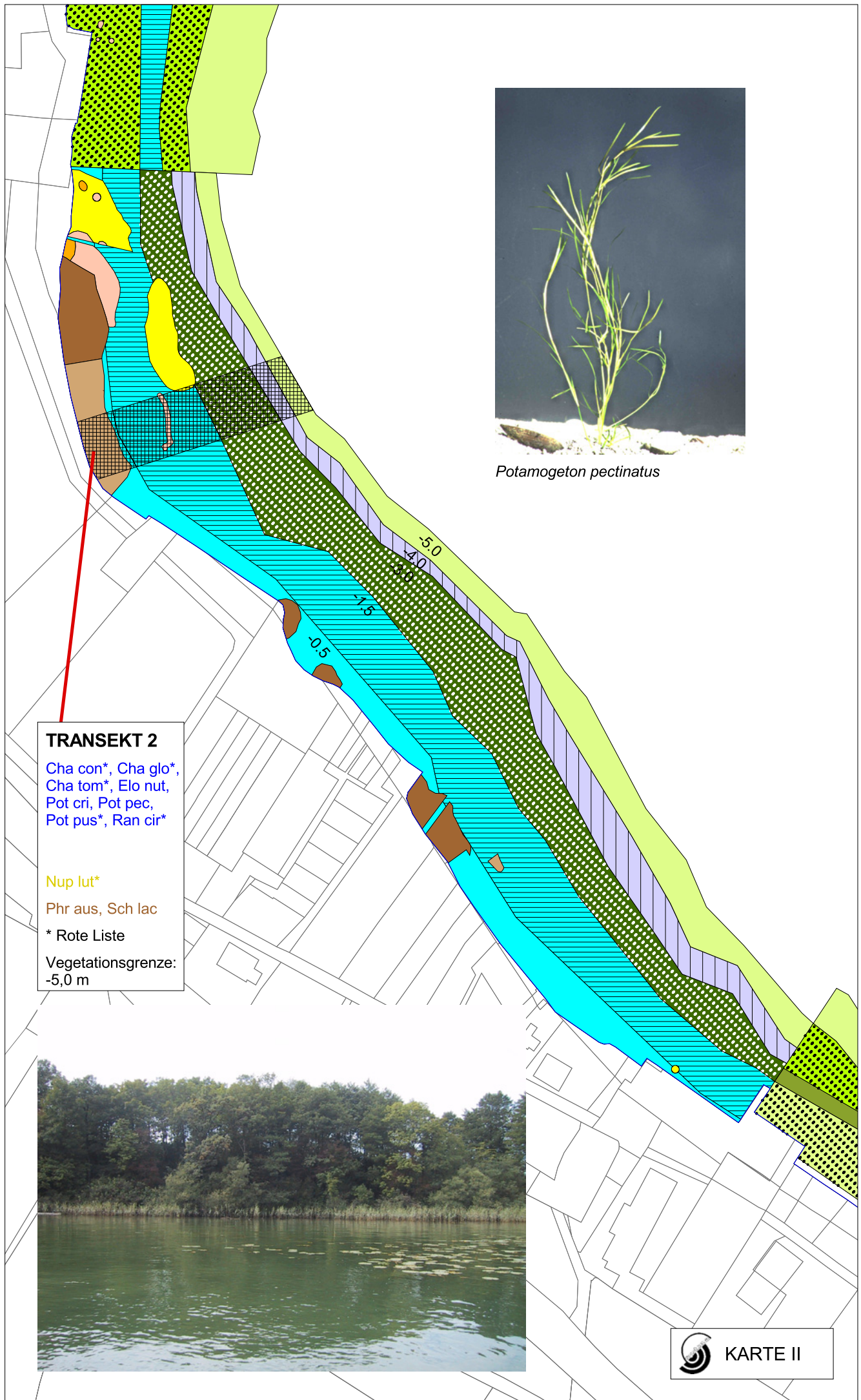
Cer dem, Cha con\*,  
Cha tom\*, Elo nut,  
Myr spi, Pot muc,  
Pot per\*, Pot pus\*,  
Ran cir\*, Utr aus\*,  
Zan pal

\* Rote Liste

Vegetationsgrenze:  
-6,0 m



*Chara tomentosa*



*Potamogeton pectinatus*

**TRANSEKT 2**  
 Cha con\*, Cha glo\*,  
 Cha tom\*, Elo nut,  
 Pot cri, Pot pec,  
 Pot pus\*, Ran cir\*

Nup lut\*

Phr aus, Sch lac

\* Rote Liste

Vegetationsgrenze:  
 -5,0 m





*Chara globularis*



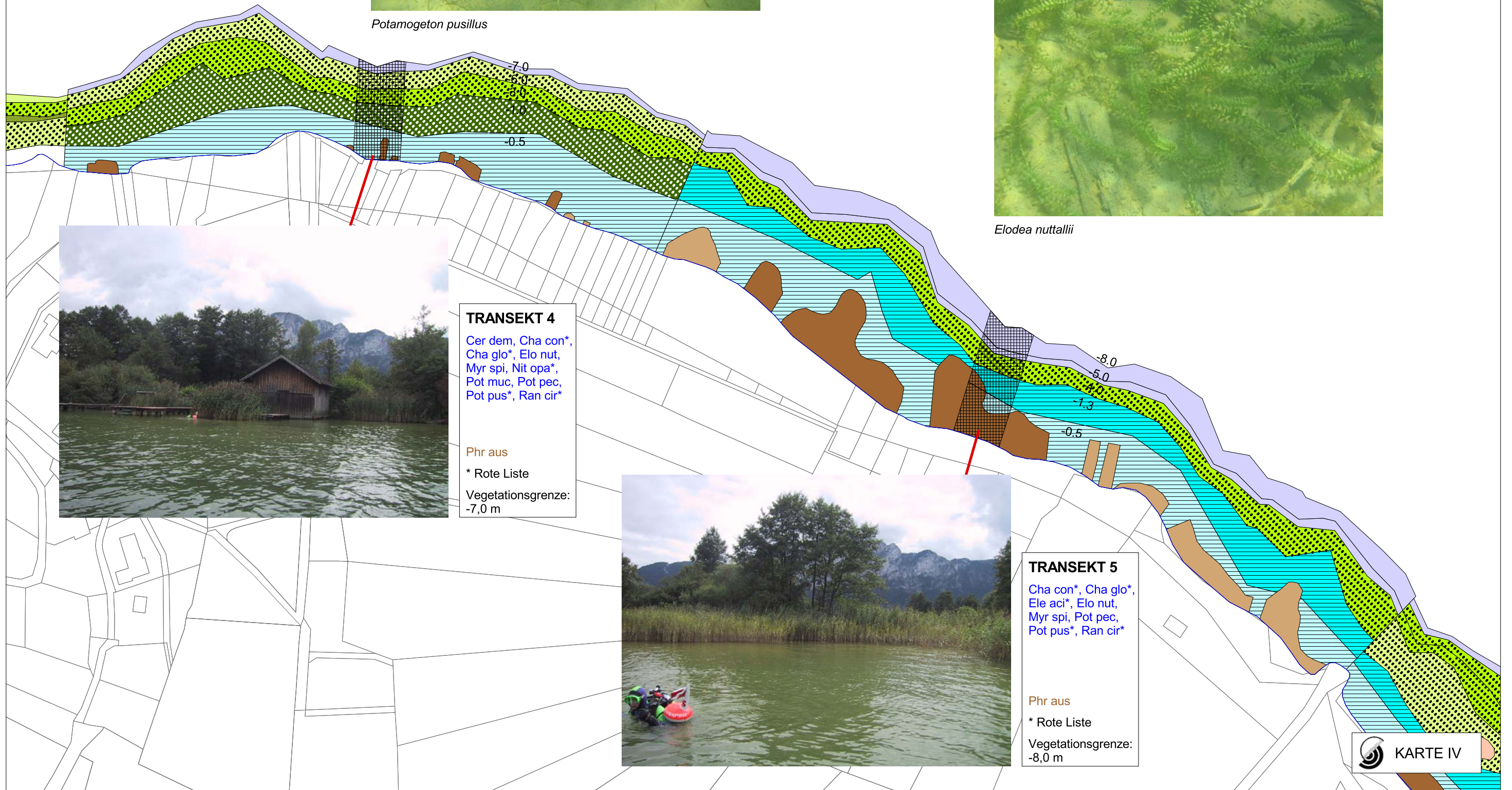
**TRANSEKT 3**  
Cer dem, Cha glo\*,  
Myr spi, Pot cri,  
Pot muc, Pot pec,  
Pot per\*, Pot pus\*,  
Ran cir\*  
  
Phr aus, Sch lac  
\* Rote Liste  
Vegetationsgrenze:  
-6,0 m



*Potamogeton pusillus*



*Elodea nuttallii*



**TRANSEKT 4**

Cer dem, Cha con\*,  
 Cha glo\*, Elo nut,  
 Myr spi, Nit opa\*,  
 Pot muc, Pot pec,  
 Pot pus\*, Ran cir\*

Phr aus

\* Rote Liste

Vegetationsgrenze:  
 -7,0 m



**TRANSEKT 5**

Cha con\*, Cha glo\*,  
 Ele aci\*, Elo nut,  
 Myr spi, Pot pec,  
 Pot pus\*, Ran cir\*

Phr aus

\* Rote Liste

Vegetationsgrenze:  
 -8,0 m





*Chara contraria*



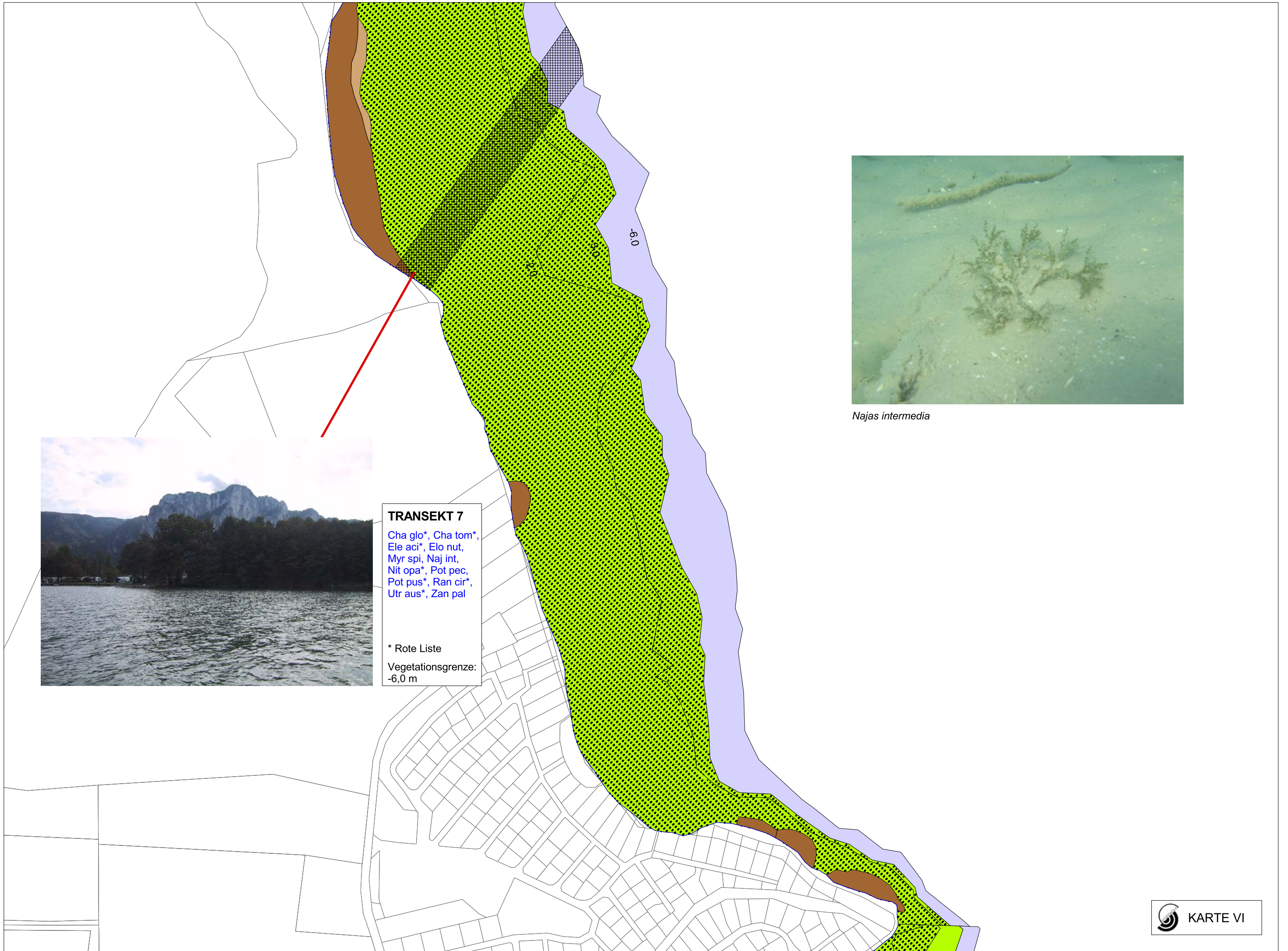
**TRANSEKT 6**

- Cha con\*, Cha del\*,
- Cha glo\*, Elo nut,
- Myr spi, Pot pec,
- Pot pus\*, Ran cir\*

Phr aus

\* Rote Liste

Vegetationsgrenze:  
-7,5 m



**TRANSEKT 7**

Cha glo\*, Cha tom\*,  
Ele aci\*, Elo nut,  
Myr spi, Naj int,  
Nit opa\*, Pot pec,  
Pot pus\*, Ran cir\*,  
Utr aus\*, Zan pal

\* Rote Liste  
Vegetationsgrenze:  
-6,0 m



*Najas intermedia*



**TRANSEKT 8**

Cha con\*, Cha glo\*,  
Ele aci\*, Myr spi,  
Naj mar, Pot pec,  
Pot per\*, Pot pus\*,  
Utr aus\*, Zan pal

Phr aus

\* Rote Liste

Vegetationsgrenze:  
-7,0 m



*Potamogeton pectinatus*



**TRANSEKT 9**

Cha glo\*, Ele aci\*,  
Elo nut, Fon ant,  
Myr spi, Naj mar,  
Pot muc, Pot pec,  
Pot pus\*

Nup lut\*

Sch lac

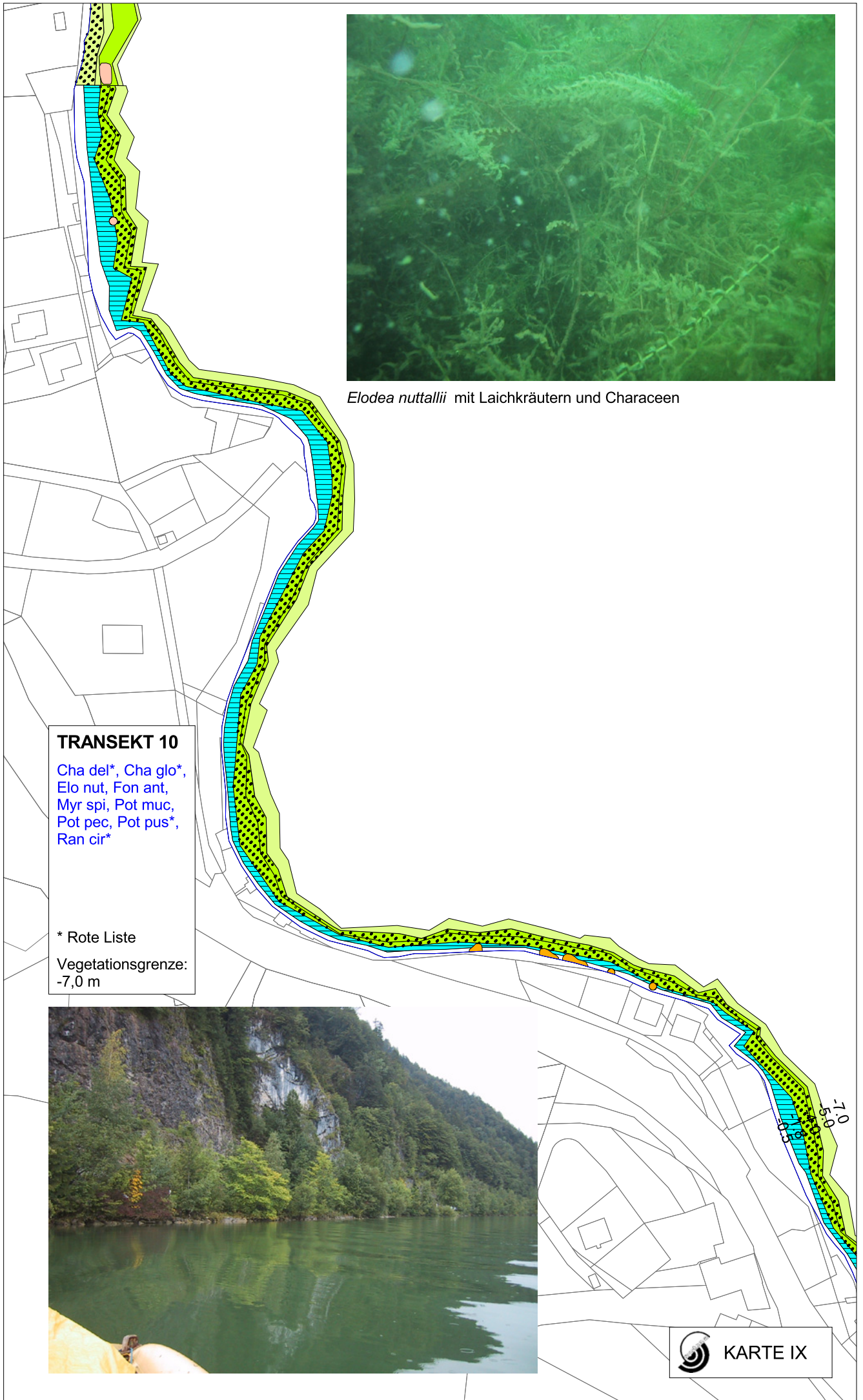
\* Rote Liste

Vegetationsgrenze:  
-6,7 m



*Elodea nuttallii*



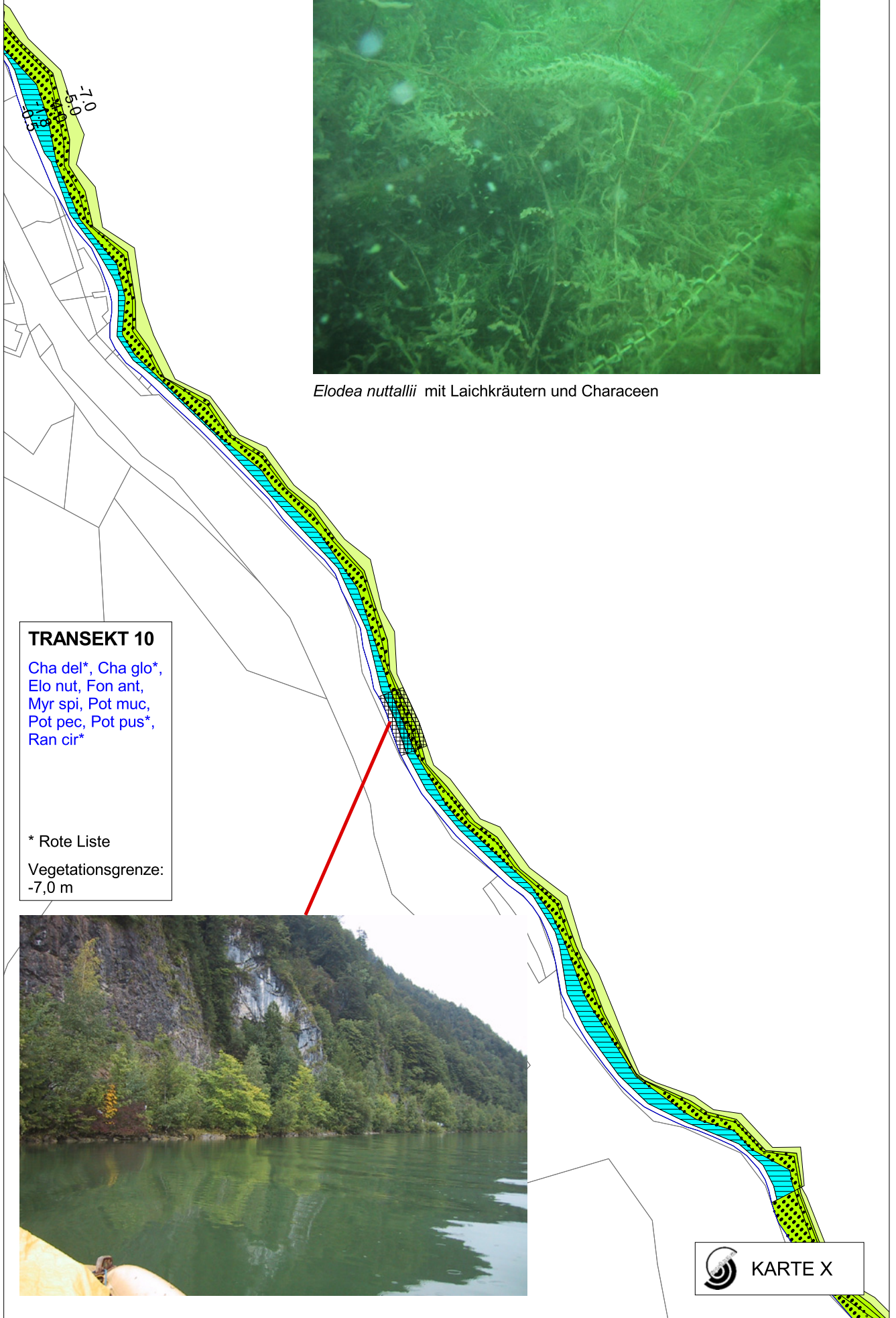


*Elodea nuttallii* mit Laichkräutern und Characeen

**TRANSEKT 10**  
 Cha del\*, Cha glo\*,  
 Elo nut, Fon ant,  
 Myr spi, Pot muc,  
 Pot pec, Pot pus\*,  
 Ran cir\*

\* Rote Liste  
 Vegetationsgrenze:  
 -7,0 m





*Elodea nuttallii* mit Laichkräutern und Characeen

**TRANSEKT 10**  
Cha del\*, Cha glo\*,  
Elo nut, Fon ant,  
Myr spi, Pot muc,  
Pot pec, Pot pus\*,  
Ran cir\*

\* Rote Liste  
Vegetationsgrenze:  
-7,0 m



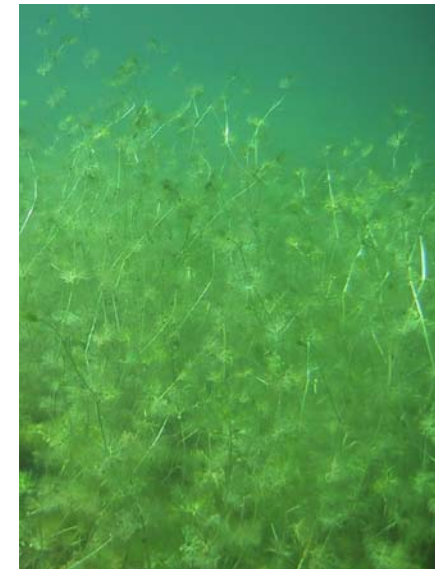


**TRANSEKT 11**

Cha glo\*, Elo nut,  
Myr spi, Pot muc,  
Pot pus\*, Ran cir\*,  
Zan pal

\* Rote Liste

Vegetationsgrenze:  
-6,0 m



*Ranunculus circinatus*

6,0  
4,0  
2,0



*Potamogeton pusillus*



**TRANSEKT 12**

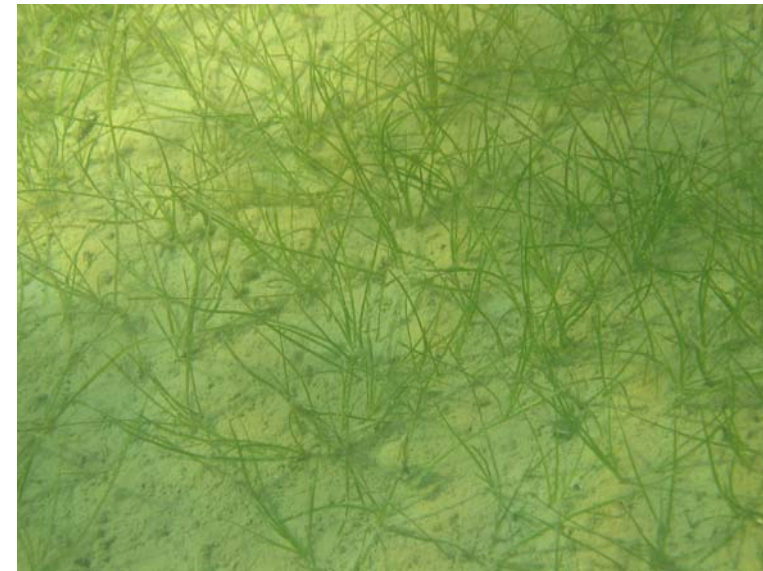
Cha glo\*, Elo nut,  
Myr spi, Pot pus\*,  
Zan pal

Sch lac

\* Rote Liste

Vegetationsgrenze:  
-6,5 m



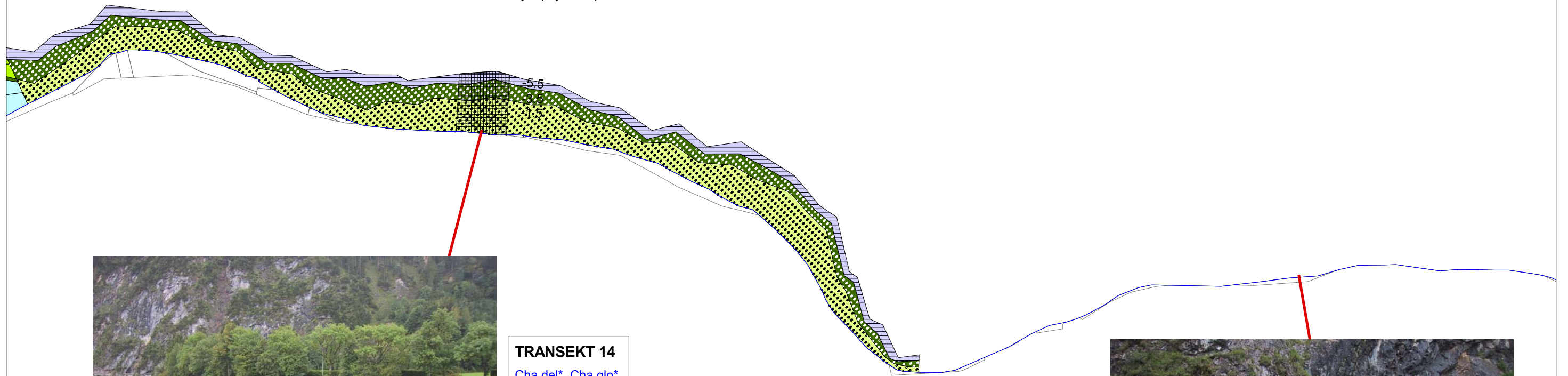


*Zanichellia palustris*





*Myriophyllum spicatum*



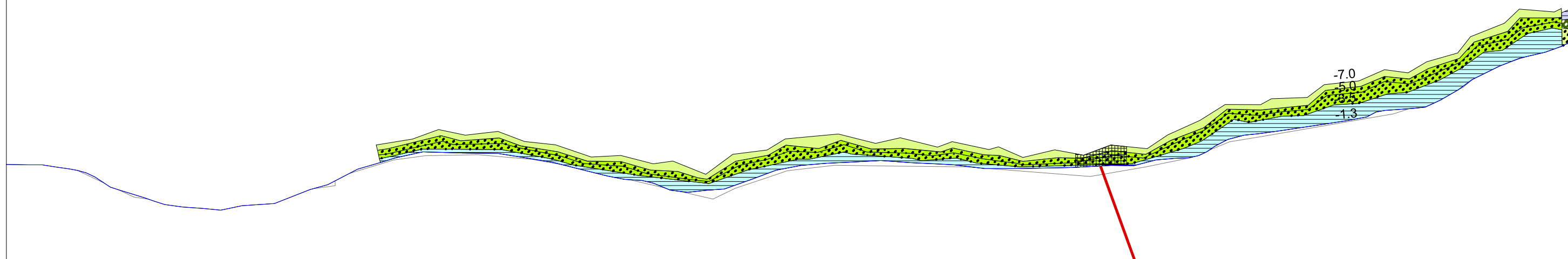
**TRANSEKT 14**  
Cha del\*, Cha glo\*,  
Myr spi, Pot pec,  
Pot pus\*, Ran cir\*  
  
Sch lac  
\* Rote Liste  
Vegetationsgrenze:  
-5,5 m



**TRANSEKT 15**  
  
\* Rote Liste  
Vegetationsgrenze:  
-0,0 m



*Chara delicatula, Myriophyllum spicatum*



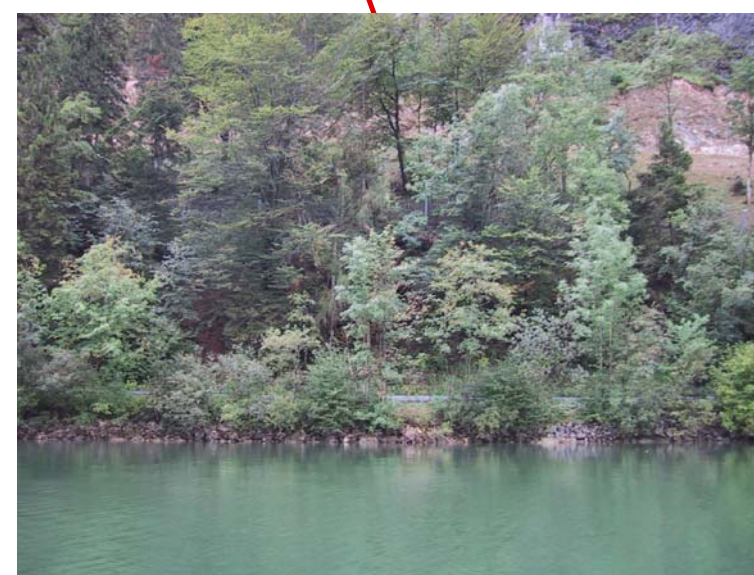
**TRANSEKT 16**

Cha del\*, Cha glo\*,  
Elo nut, Myr spi,  
Pot muc, Pot pec,  
Pot pus\*

Sch lac

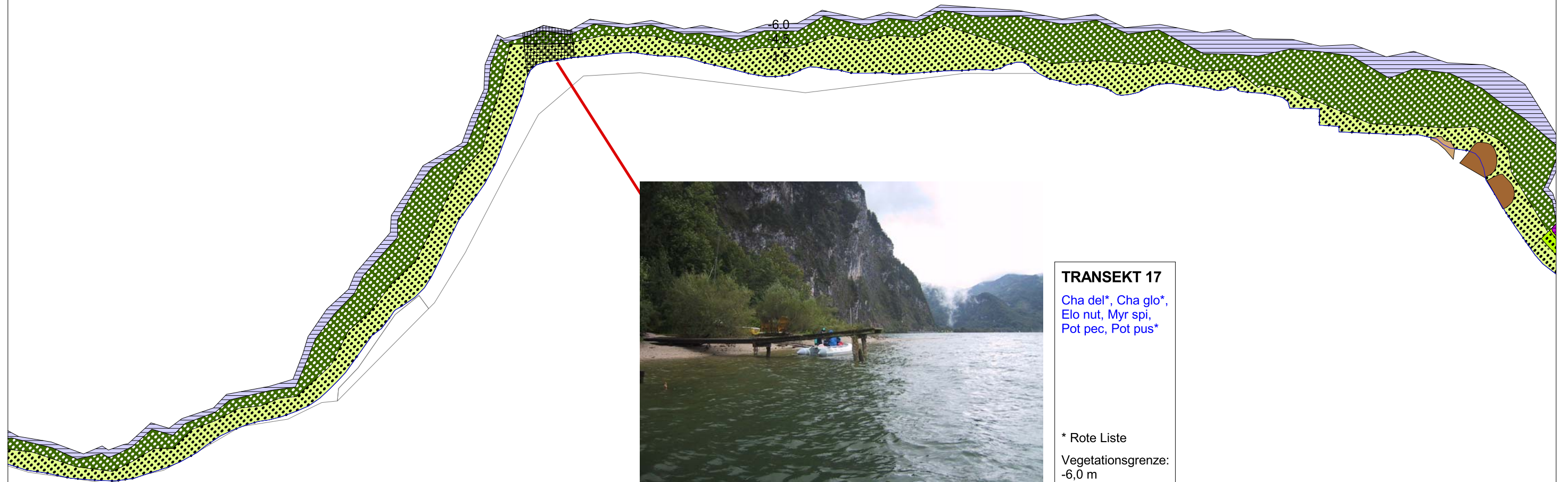
\* Rote Liste

Vegetationsgrenze:  
-7,0 m





*Potamogeton pectinatus*



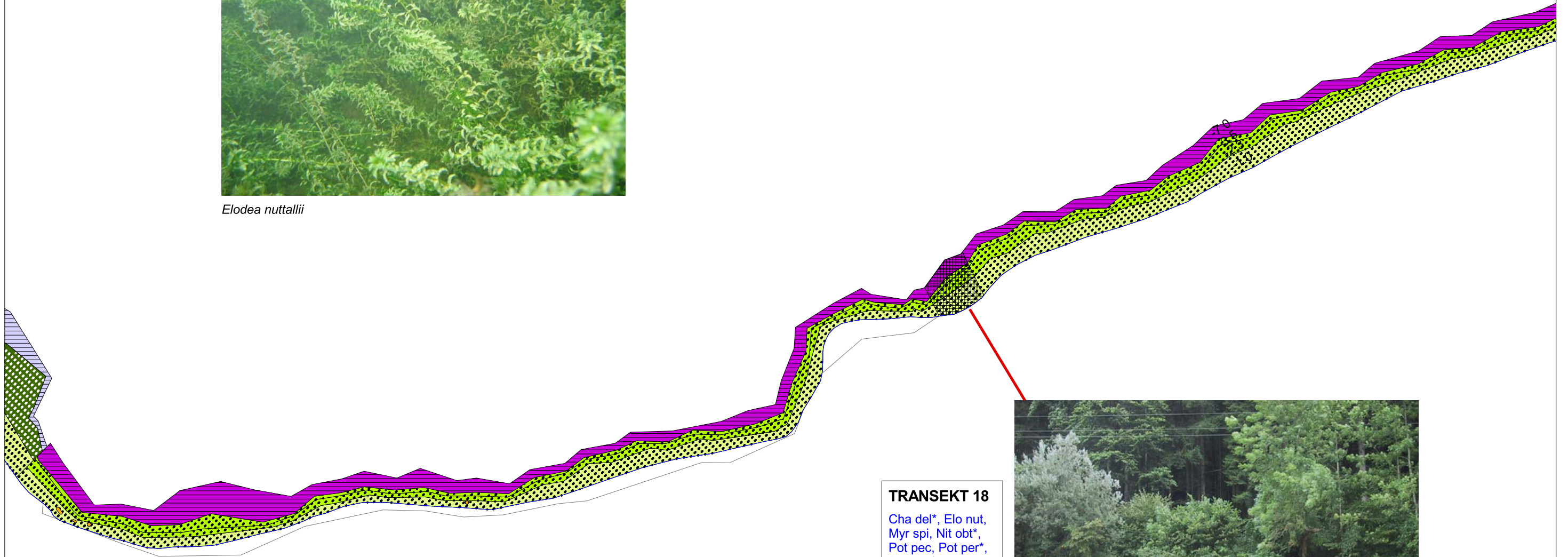
**TRANSEKT 17**

Cha del\*, Cha glo\*,  
Elo nut, Myr spi,  
Pot pec, Pot pus\*

\* Rote Liste  
Vegetationsgrenze:  
-6,0 m



*Elodea nuttallii*



**TRANSEKT 18**

Cha del\*, Elo nut,  
Myr spi, Nit obt\*,  
Pot pec, Pot per\*,  
Pot pus\*

\* Rote Liste

Vegetationsgrenze:  
-7,0 m





**TRANSEKT  
Ausrinn**

Cha asp\*, Cha glo\*,  
Elo nut, Pot cri,  
Pot muc, Ran cir\*

\* Rote Liste  
Vegetationsgrenze:  
-8,5 m



*Chara aspera*



**TRANSEKT 19**

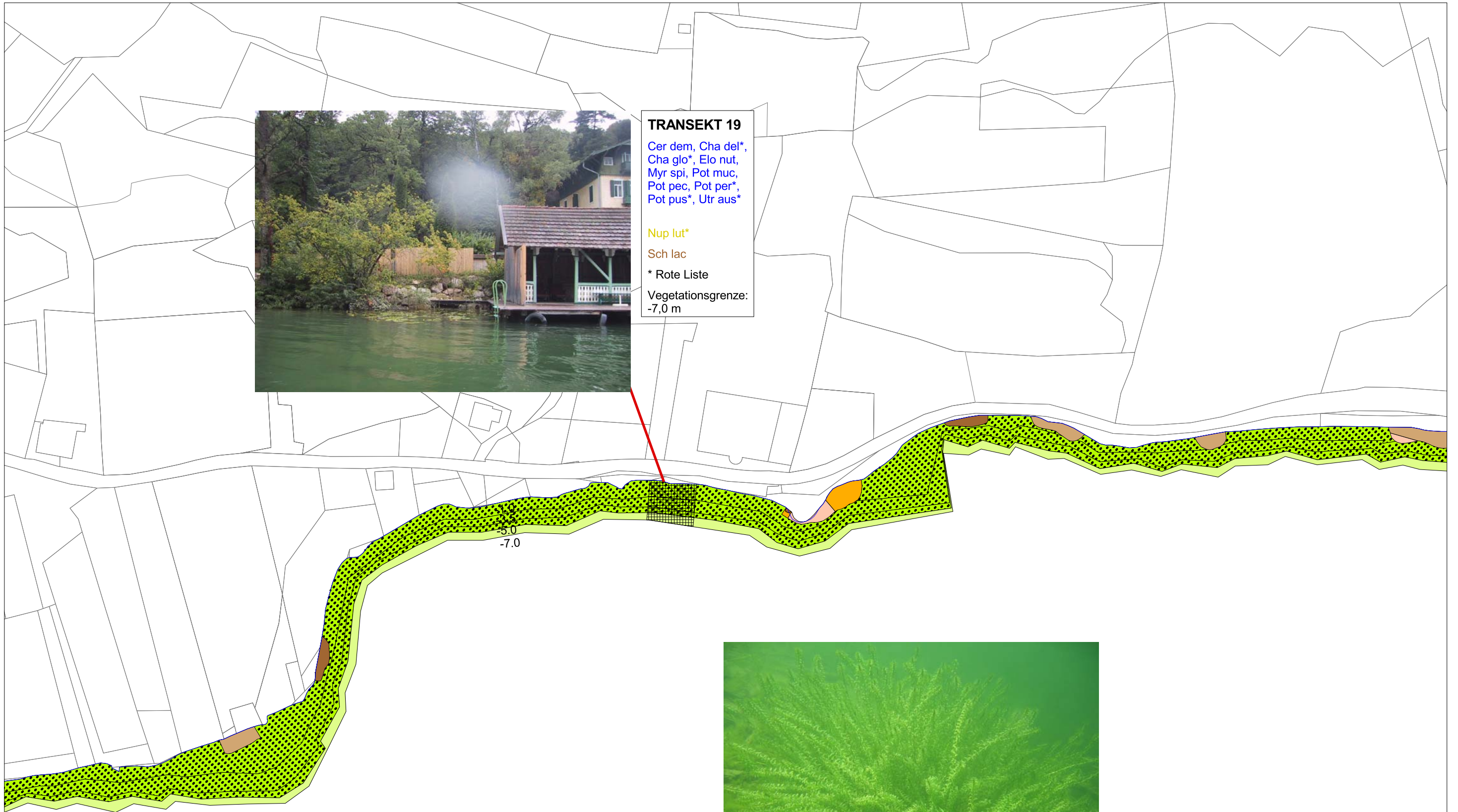
Cer dem, Cha del\*,  
Cha glo\*, Elo nut,  
Myr spi, Pot muc,  
Pot pec, Pot per\*,  
Pot pus\*, Utr aus\*

Nup lut\*

Sch lac

\* Rote Liste

Vegetationsgrenze:  
-7,0 m



*Elodea nuttallii*







**TRANSEKT 20**  
 Ele aci\*, Elo nut,  
 Myr spi, Pot pec,  
 Pot per\*, Pot pus\*,  
 Ran cir\*

Phr aus, Sch lac

\* Rote Liste

Vegetationsgrenze:  
 -4,5 m



*Potamogeton perfoliatus*

**TRANSEKT 21**  
Cha asp\*, Cha glo\*,  
Elo nut, Myr spi,  
Pot muc, Pot pec,  
Pot per\*, Pot pus\*

Sch lac

\* Rote Liste

Vegetationsgrenze:  
-7,0 m



*Elodea nuttallii*



**TRANSEKT 22**

Cha asp\*, Cha glo\*,  
Elo nut, Myr spi,  
Pot muc, Pot pec,  
Pot per\*, Pot pus\*,  
Utr aus\*, Zan pal

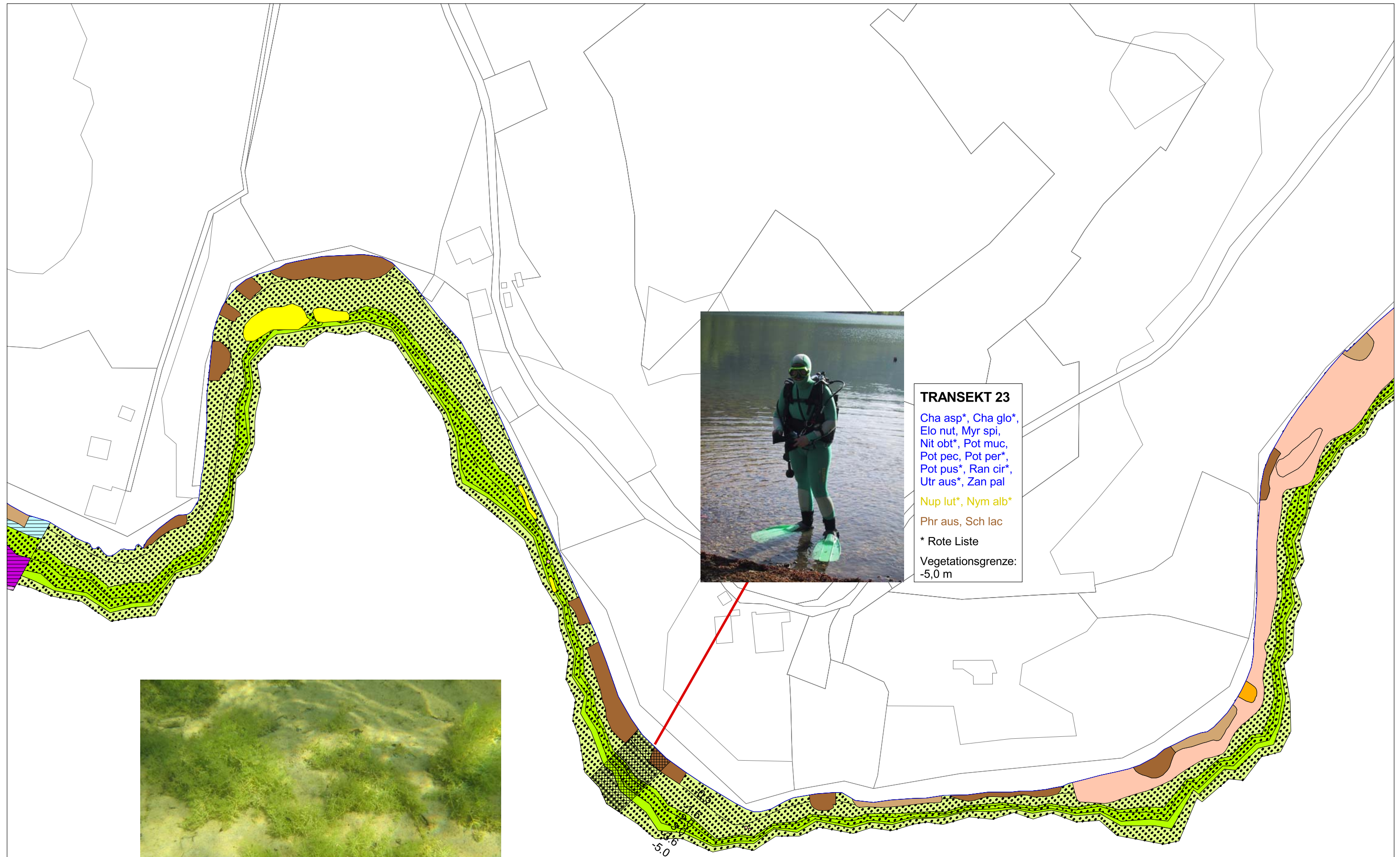
Sch lac

\* Rote Liste

Vegetationsgrenze:  
-7,5 m



*Elodea nuttallii*



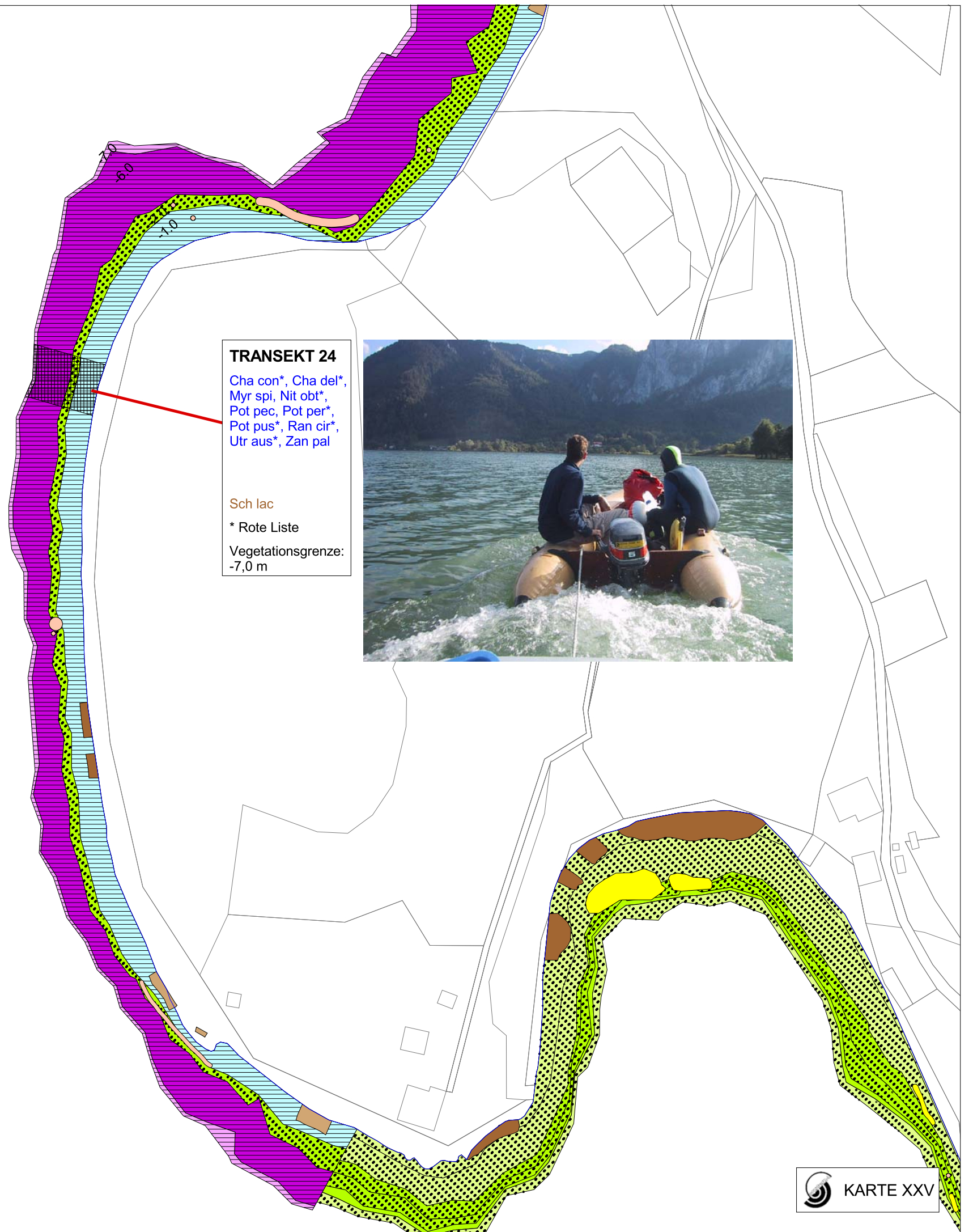
**TRANSEKT 23**  
 Cha asp\*, Cha glo\*,  
 Elo nut, Myr spi,  
 Nit obt\*, Pot muc,  
 Pot pec, Pot per\*,  
 Pot pus\*, Ran cir\*,  
 Utr aus\*, Zan pal  
 Nup lut\*, Nym alb\*  
 Phr aus, Sch lac  
 \* Rote Liste  
 Vegetationsgrenze:  
 -5,0 m



*Chara aspera*



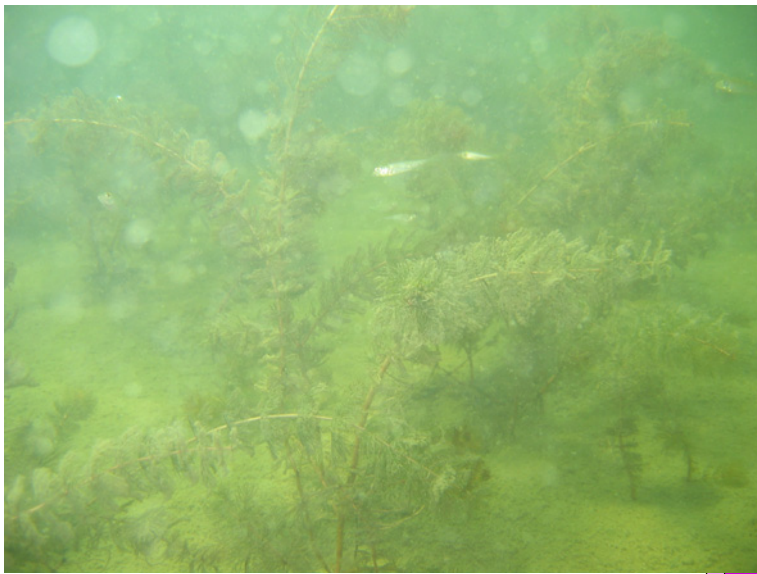
*Myriophyllum spicatum*



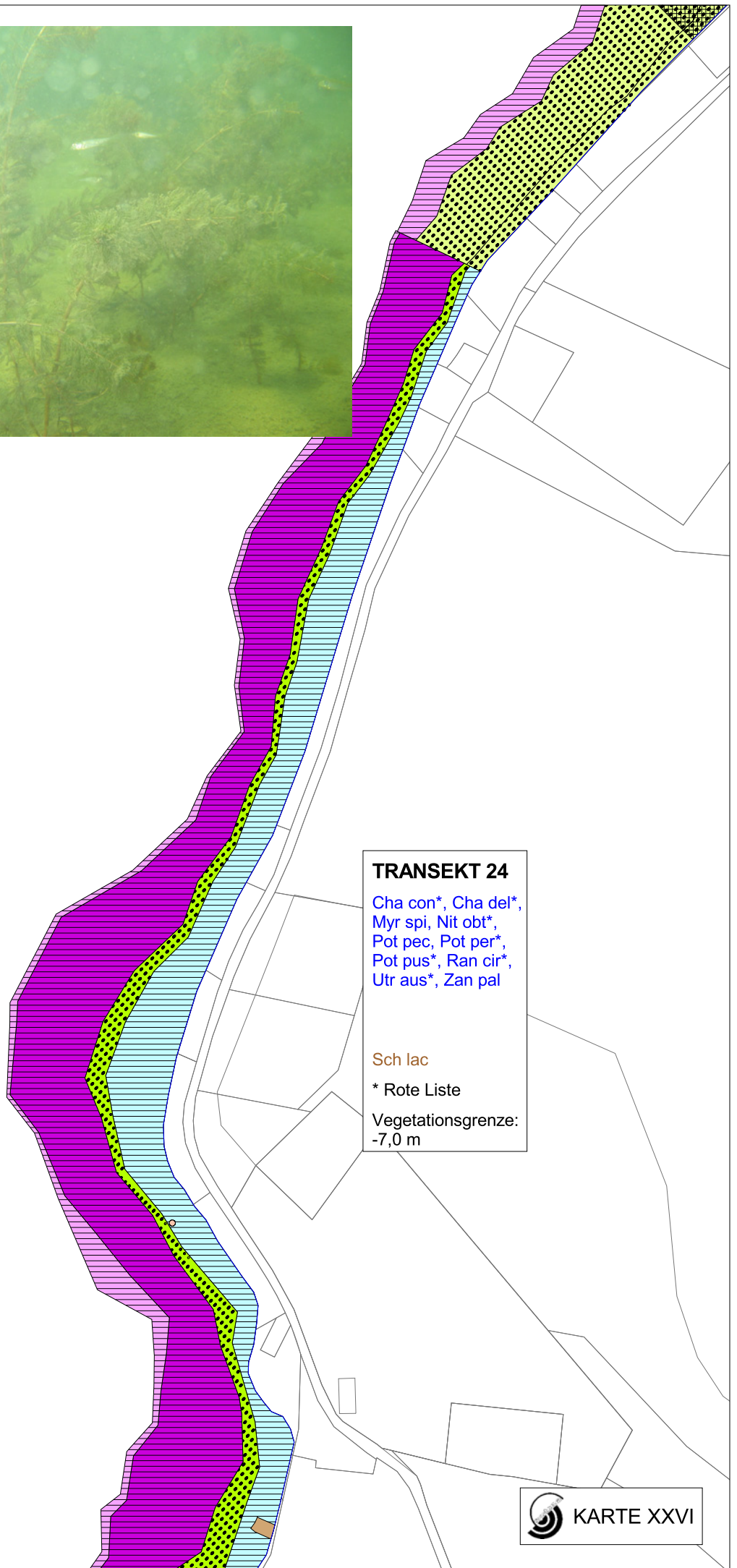
**TRANSEKT 24**  
Cha con\*, Cha del\*,  
Myr spi, Nit obt\*,  
Pot pec, Pot per\*,  
Pot pus\*, Ran cir\*,  
Utr aus\*, Zan pal

Sch lac  
\* Rote Liste  
Vegetationsgrenze:  
-7,0 m





*Myriophyllum spicatum*



**TRANSEKT 24**

Cha con\*, Cha del\*,  
Myr spi, Nit obt\*,  
Pot pec, Pot per\*,  
Pot pus\*, Ran cir\*,  
Utr aus\*, Zan pal

Sch lac

\* Rote Liste

Vegetationsgrenze:  
-7,0 m



*Myriophyllum spicatum*



**TRANSEKT 25**

Cha glo\*, Myr spi,  
Nit opa\*, Pot per\*,  
Pot pus\*, Ran cir\*,  
Utr aus\*, Zan pal

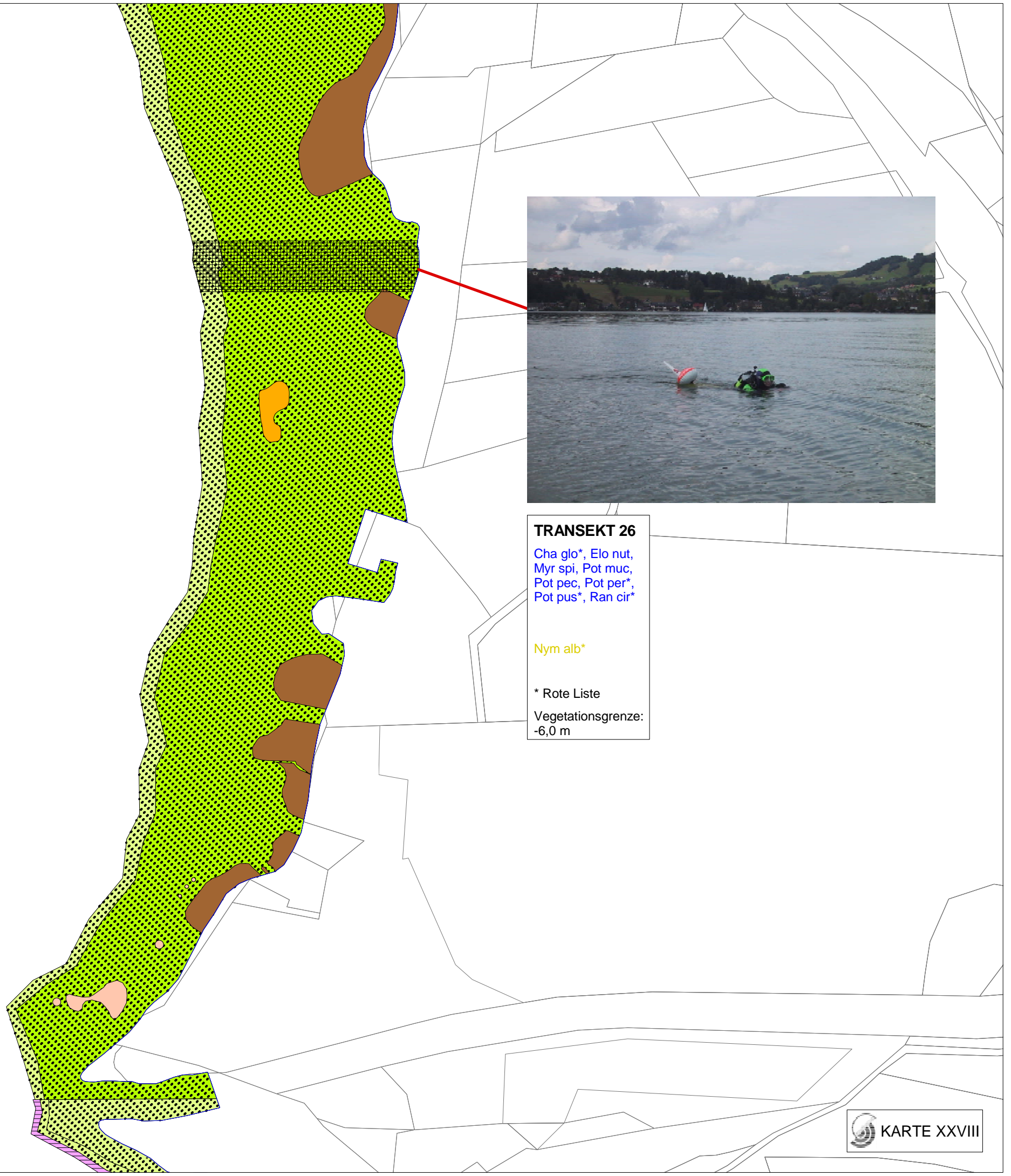
Nup lut\*

\* Rote Liste

Vegetationsgrenze:  
-6,6 m



*Elodea nuttallii*



**TRANSEKT 26**  
Cha glo\*, Elo nut,  
Myr spi, Pot muc,  
Pot pec, Pot per\*,  
Pot pus\*, Ran cir\*  
  
Nym alb\*  
  
\* Rote Liste  
Vegetationsgrenze:  
-6,0 m



**TRANSEKT 27**

Cha con\*, Ele aci\*,  
Elo nut, Myr spi,  
Nit opa\*, Pot muc,  
Pot pec, Pot per\*,  
Pot pus\*, Ran cir\*,  
Utr aus\*

Nup lut\*

Sch lac

\* Rote Liste

Vegetationsgrenze:  
-7,0 m



*Schoenoplectus lacustris*



*Potamogeton pusillus*

**TRANSEKT 28**

Cha glo\*, Elo nut,  
Myr spi, Nit opa\*,  
Nit obt\*, Pot pec,  
Pot per\*, Pot pus\*,  
Ran cir\*, Zan pal

Nup lut\*

Sch lac

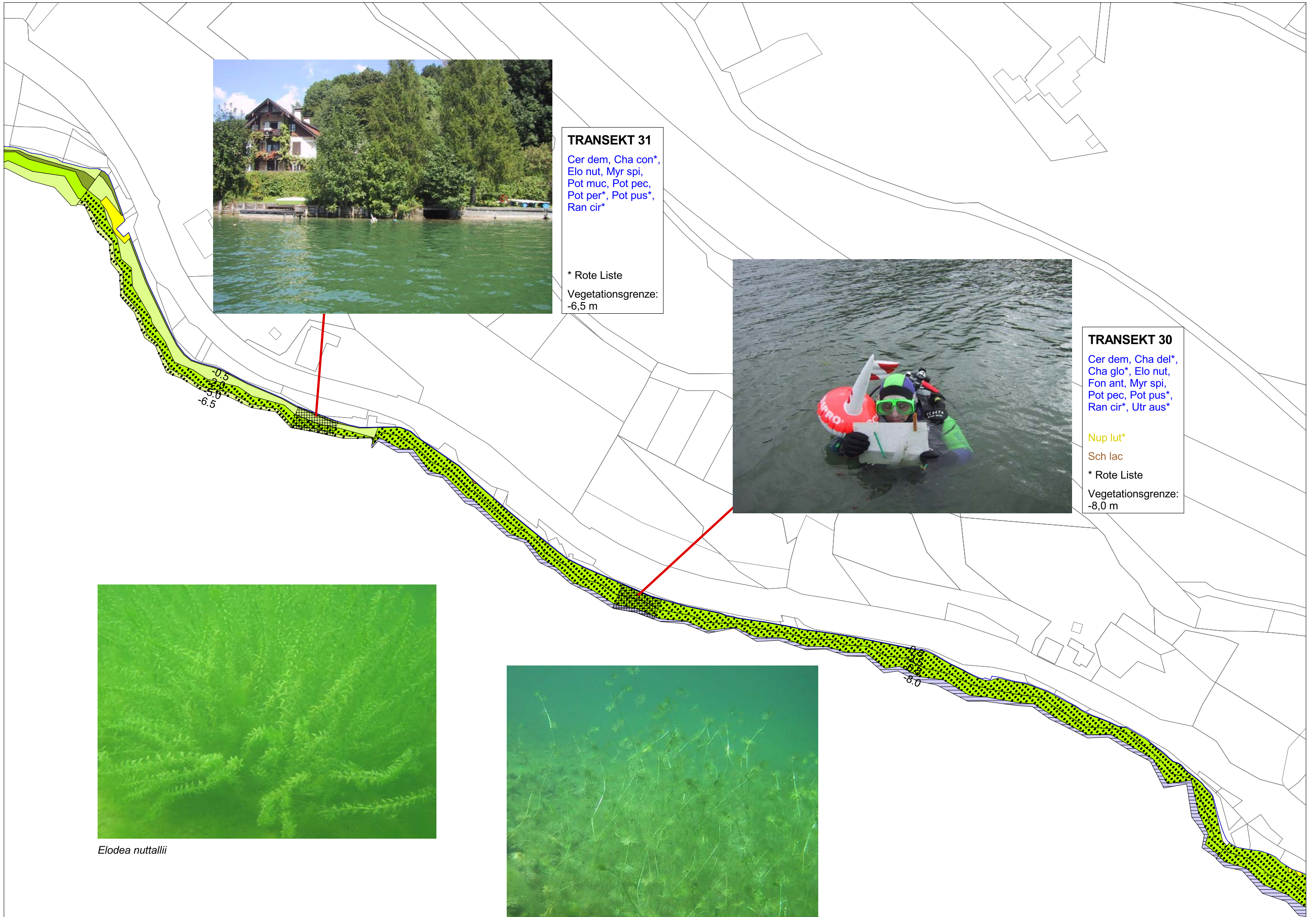
\* Rote Liste

Vegetationsgrenze:  
-7,5 m









**TRANSEKT 31**

Cer dem, Cha con\*,  
 Elo nut, Myr spi,  
 Pot muc, Pot pec,  
 Pot per\*, Pot pus\*,  
 Ran cir\*

\* Rote Liste

Vegetationsgrenze:  
 -6,5 m



**TRANSEKT 30**

Cer dem, Cha del\*,  
 Cha glo\*, Elo nut,  
 Fon ant, Myr spi,  
 Pot pec, Pot pus\*,  
 Ran cir\*, Utr aus\*

Nup lut\*

Sch lac

\* Rote Liste

Vegetationsgrenze:  
 -8,0 m



*Elodea nuttallii*



*Ranunculus circinatus*

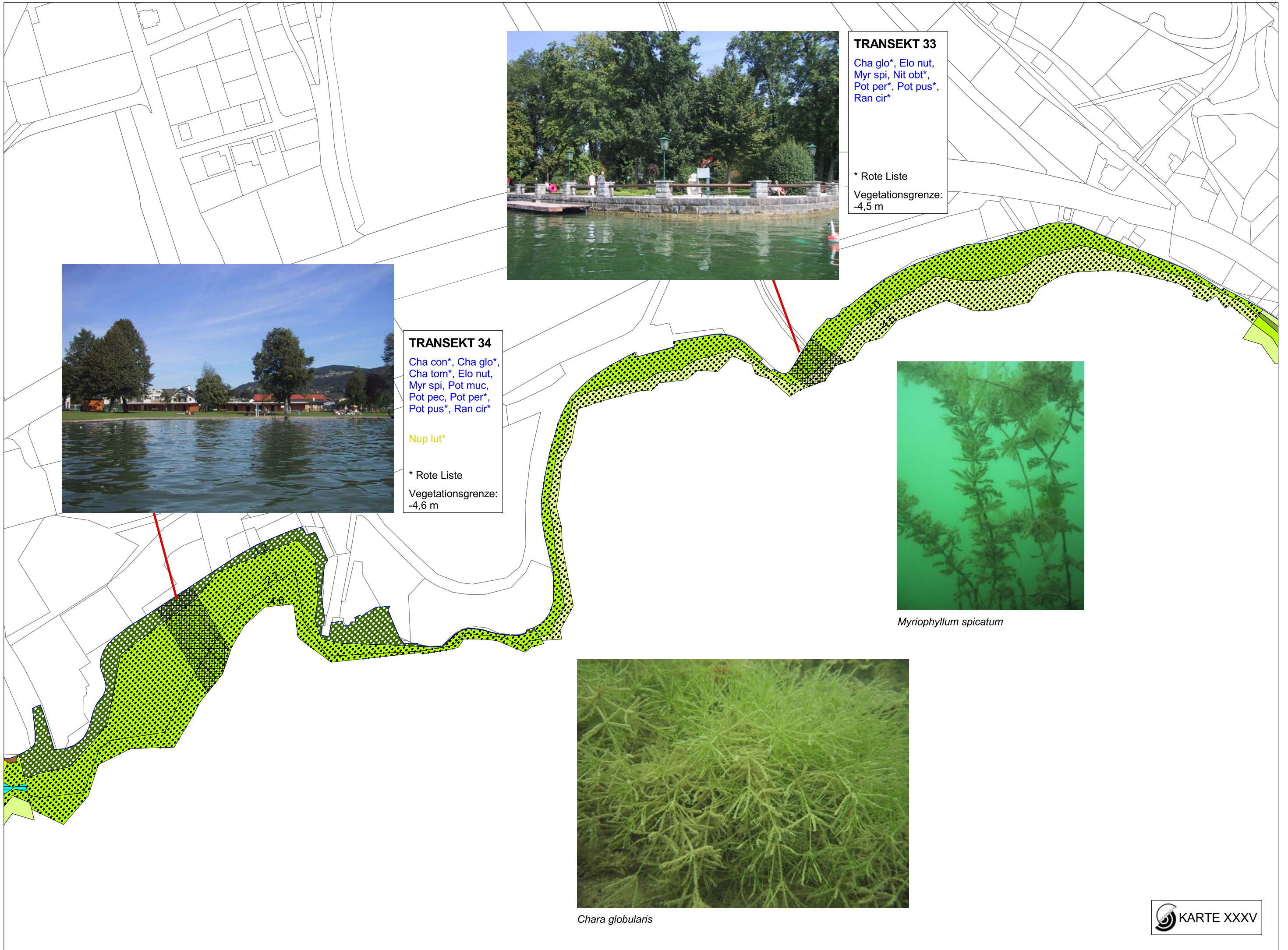


**TRANSEKT 32**  
Cer dem, Elo nut,  
Myr spi, Pot muc,  
Pot per\*, Pot pus\*,  
Ran cir\*

\* Rote Liste  
Vegetationsgrenze:  
-7,0 m



*Ceratophyllum demersum*



**TRANSEKT 33**

Cha glo\*, Elo nut,  
Myr spi, Nit obt\*,  
Pot per\*, Pot pus\*,  
Ran cir\*

\* Rote Liste

Vegetationsgrenze:  
-4,5 m



**TRANSEKT 34**

Cha con\*, Cha glo\*,  
Cha tom\*, Elo nut,  
Myr spi, Pot muc,  
Pot pec, Pot per\*,  
Pot pus\*, Ran cir\*

Nup lut\*

\* Rote Liste

Vegetationsgrenze:  
-4,6 m



*Myriophyllum spicatum*



*Chara globularis*